



# Cost Data Collection Technical Document

*Abu Dhabi Clinical Costing Road  
Map Implementation Project*

*Submission Year 2 (SY2)*

**Document Version 1.00**

## Contents

Purpose of this document.....	3
Project Background.....	3
Technical scope.....	3
The key stakeholders.....	4
System and Business Requirements .....	5
XML Schema for cost data submission (sample with dummy values) .....	7
Description, data type and validation for each field of schema: .....	11
Shafafiya Submission Portal Validations:.....	20
Submission end-to-end process flow .....	21
Internal validations and quality checks: .....	22
Document Version History.....	26



## Purpose of this document

This document outlines the technical requirements for implementing the cost data collection process from healthcare providers in Abu Dhabi. This covers information on the submission schema, submission platform submission validations and data quality and other internal validations. This cost data collection aligns with DOH's goal of establishing a value-based funding model, where healthcare providers are reimbursed based on service quality, efficiency, and cost of care. This initiative supports the transformation of healthcare funding by providing accurate cost data for informed pricing and policy making. Providers should refer to the documents *ABU DHABI CLINICAL COSTING STANDARD (Document Ref. Number:DoH/ST/FPS/ADCC/V2/2025 Version:V2)* and *Abu Dhabi Clinical Costing Guidelines (Document Ref. Number:DoH/GD/HCPFA/ADCC/V2/2025 Version:V2)*.

## Project Background

DOH as the healthcare regulator in Abu Dhabi, aims to improve care quality and operational efficiency within the Emirate by utilising patient-level clinical costing data to enhance the Value-Based HealthCare lifecycle via the creation of funding and pricing policies that utilise annual Clinical Costing results.

Shafafiya serves as Abu Dhabi's transaction exchange platform, processing healthcare claims data between providers, payers, and government entities and is used as the data collection platform for healthcare costing data submissions.

## Technical scope

The technical scope of this implementation is to continue the Clinical Costing transaction type in Shafafiya for the submission, validation, and analysis of healthcare patient – level costing data from providers for the Financial Year 2025. Cost data will be submitted by providers or their representatives, and reviewed for compliance with Department of Health's data standards, and validations.

# The key stakeholders

The following list comprises of the project stakeholders.

Sr. #	Stakeholder Name	Dept/Sec	Internal / External	Responsibility (for cost data submission)
1	Department Of Health	Clinical Costing / Healthcare Payer Sector	Internal	Act as primary contact between provider and DOH technical teams to ensure successful data submission
2	Department Of Health	Digital Health and Shafafiya Teams	Internal	Ensures the platform operates smoothly, manages data transactions, and supports the integration of new functionalities. Authenticated via internal Shafafiya system
3	Healthcare providers	All providers with direct patient care	External	Responsible for submitting accurate costing data through Shafafiya as per DOH standards and specifications



# System and Business Requirements

<b>Requirement ID</b>	SHF-COST-001
<b>Title</b>	Costing Data Submission via Shafafiya
<b>Description/Purpose</b>	Healthcare providers will submit costing data through Shafafiya using a unique transaction ID specifically for this data type. Cost data will be collected annually, in line with DOH's guidelines, during a specified submission window
<b>Ref. Use Case ID</b>	UC-SHF-COST-001
<b>User Story</b>	As a healthcare provider, I want to submit my organization's costing data annually via Shafafiya to comply with DOH's requirements for value-based funding and reimbursement.
<b>Actors</b>	Healthcare Providers
<b>Systems/Applications involved</b>	Shafafiya Portal, Costing Data Module
<b>Pre-Condition</b>	Providers have received the costing data template and are aware of the annual submission requirements.
<b>Post-Condition</b>	Costing data is successfully submitted in the Shafafiya system, ready for validation and analysis.
<b>Main workflow</b>	<ol style="list-style-type: none"> <li><b>1. Costing Submission:/ Resubmission:</b> Providers prepare costing data files following DOH structure. Requests are submitted through provider integration with Shafafiya.</li> <li><b>2. Transaction ID:</b> A unique transaction ID is assigned for tracking.</li> <li><b>3. Data Entry and File Upload:</b> Providers upload the costing data files, following the DOH-defined template and specifications. Transaction size must not exceed 5 MB</li> <li><b>4. PTE Submit:</b> Providers are to submit their costing data ASAP via PTE prior to the go-live date within the specified annual submission window</li> <li><b>5. Production Submit:</b> Providers submit their final costing data within the specified annual submission window (1 May to 31 May 2026). <i>NB: Reconciliation Report is to be submitted concurrently to <a href="mailto:dohclinicalcosting@doh.gov.ae">dohclinicalcosting@doh.gov.ae</a></i></li> <li><b>6. Acknowledgment:</b> The system acknowledges successful submission and initiates the validation process.</li> <li><b>7. Resubmission:</b> Providers can only re-submit their patient level cost data as corrections. Resubmissions occur if the providers receive any communications from DOH to do so.</li> </ol>



	<p>Communication is via the DOH Clinical Costing Team  <a href="mailto:DoHclinicalcosting@doh.gov.ae">DoHclinicalcosting@doh.gov.ae</a> not directly through Shafafiya</p>
<b>Wireframes</b>	<a href="#">N/A</a>
<b>Assumptions</b>	<ul style="list-style-type: none"> <li>• Providers are aware of the submission requirements and deadlines.</li> <li>• Providers follow the DOH-issued template and specifications for request format and data content.</li> <li>• Providers are adhering to the validation rules published by the Department of Health (DOH) in their clinical costing systems before submitting their costing results to the DOH.</li> <li>• Providers must conduct their clinical costing processes in their <b>own clinical costing systems</b>, following the clinical costing standards and guidelines published and the fields definition and schema provided by DOH team.             <ul style="list-style-type: none"> <li>○ <b>ClaimID:</b> Data must be submitted as a unique ClaimID. Where a ClaimID does not already exist (such as Self-Pay services), the Provider is responsible for creating unique IDs</li> <li>○ <b>Encounter Information:</b> Accurate, relevant information to be completed and submitted by the provider.</li> <li>○ <b>Cost Aggregation:</b> Costs will be aggregated to a cost bucket level and cost type level per ClaimID.</li> </ul> </li> </ul>



## XML Schema for cost data submission (sample with dummy values)

```

<Cost.Submission>
  <!--Header is required as we have common logic to validate the data-->
  <Header>
    <SenderID>MF118</SenderID>
    <ReceiverID>HAAD</ReceiverID>
    <TransactionDate>20/11/2024 10:31</TransactionDate>
    <RecordCount>1</RecordCount>
    <DispositionFlag>PTE_SUBMIT</DispositionFlag>
  </Header>
  <Claim>
    <ID>1468-146802-65036</ID>
    <ProviderID>MF118</ProviderID>
    <Encounter>
      <FacilityID>MF118</FacilityID>
      <ID>49253687</ID>
      <ActivityClinicianID>GD83792</ActivityClinicianID>
      <PatientID>3779253</PatientID>
      <Type>1</Type>
      <Start>04/01/2023 14:30</Start>
      <End>04/01/2023 14:30</End>
      <StartType>1</StartType>
      <Specialty>General Practitioner</Specialty>
      <SubSpecialty>General Practitioner</SubSpecialty>
      <DRGCode>E01B</DRGCode>
    </Encounter>
  </Claim>
</Cost.Submission>

```



<ServiceCode>E01B</ ServiceCode >

<EndType>1</EndType>

<Diagnosis>

<Type>Principal</Type>

<Code>R80.9</Code>

</Diagnosis>

<Procedure>

<Type>Principal</Type>

<Code>111-11</Code>

<Duration>15</Duration>

</Procedure>

<EDTriageLevel>0</EDTriageLevel>

<OPAttendanceType>Followup Attendance</OPAttendanceType>

<TheatreAttendanceFlag>0</TheatreAttendanceFlag>

<CriticalCareTime>0</CriticalCareTime>

<VentilationTime>0</VentilationTime>

<CostBucketDirect>

<Allied>0.000</Allied>

<Anaesthesia>0.000</Anaesthesia>

<Dental>0.000</ Dental>

<ED>0.000</ED>

<Home>0.000</ Home>

<ICU>0.000</ICU>

<Imaging>0.000</Imaging>

<Laboratory>0.000</Laboratory>

<Physician>25.294</Physician>

<OP>18.145</OP>

<OR>0.000</OR>

<Other>0.000</Other>



```
<Pharmacy>0.000</Pharmacy>
<Prosthesis>0.000</Prosthesis>
<SPS>0.000</SPS>
<Ward>0.000</Ward>
</CostBucketDirect>
<CostBucketOverheads>
<Allied>0.000</Allied>
<Anaesthesia>0.000</Anaesthesia>
<Dental>0.000</Dental>
<ED>0.000</ED>
<Home>0.000</Home>
<ICU>0.000</ICU>
<Imaging>0.000</Imaging>
<Laboratory>0.000</Laboratory>
<Physician>25.294</Physician>
<OP>18.145</OP>
<OR>0.000</OR>
<Other>0.000</Other>
<Pharmacy>0.000</Pharmacy>
<Prosthesis>0.000</Prosthesis>
<SPS>0.000</SPS>
<Ward>0.000</Ward>
</CostBucketOverheads>
<CostTypeDetails>
<SWNurs>0.000</SWNurs>
<SWDoc>0.000</SWDoc>
<SWAllied>0.000</SWAllied>
<SWNonClin>0.000</SWNonClin>
<Laboratory>0.000</Laboratory>
```



<Imaging>0.000</Imaging>

<Pharmacy>0.000</Pharmacy>

<Prostheses>0.000</Prostheses>

<MS>0.000</MS>

<Hotel>0.000</Hotel>

<GS>0.000</GS>

<Depreciation>0.000</Depreciation>

<OHF>0.000</OHF>

<OH Depreciation>0.000</ OH Depreciation>

<OHC>0.000</OHC>

<NABMs>0.000</NABMs>

</CostTypeDetails>

</Encounter>

<Resubmission>

<Type> </Type>

<Comment> </Comment>

</Resubmission>

</Claim>



## Description, data type and validation for each field of schema:

The existing schema is published on the DOH website, where applicable specific links are provided in the Data Definition field below. The general link to these references is [www.doh.gov.ae/shafafiya/dictionary](http://www.doh.gov.ae/shafafiya/dictionary)

Field Name	Description	Validation	Data Format / Definition
<b>&lt;Header&gt;</b>			
SenderID	Transaction Sender ID	Required	<a href="https://shafafiyaportal.doh.gov.ae/dictionary/CommonTypes_xsd~s~HeaderSenderID.html">https://shafafiyaportal.doh.gov.ae/dictionary/CommonTypes_xsd~s~HeaderSenderID.html</a>
ReceiverID	Transaction Receiver ID	Required. Must be 'HAAD'	<a href="https://shafafiyaportal.doh.gov.ae/dictionary/CommonTypes_xsd~s~HeaderReceiverID.html">https://shafafiyaportal.doh.gov.ae/dictionary/CommonTypes_xsd~s~HeaderReceiverID.html</a>
TransactionDate	Cost Transaction Date	Required	<a href="https://shafafiyaportal.doh.gov.ae/dictionary/CommonTypes_xsd~s~HeaderTransactionDate.html">https://shafafiyaportal.doh.gov.ae/dictionary/CommonTypes_xsd~s~HeaderTransactionDate.html</a>
RecordCount	Claims Count	Required	<a href="https://shafafiyaportal.doh.gov.ae/dictionary/CommonTypes_xsd~s~HeaderRecordCount.html">https://shafafiyaportal.doh.gov.ae/dictionary/CommonTypes_xsd~s~HeaderRecordCount.html</a>
DispositionFlag	Submission Environment	Required	<a href="https://shafafiyaportal.doh.gov.ae/dictionary/CommonTypes_xsd~s~HeaderDispositionFlag.html">https://shafafiyaportal.doh.gov.ae/dictionary/CommonTypes_xsd~s~HeaderDispositionFlag.html</a>
<b>&lt;/Header&gt;</b>			
<b>&lt;Claim&gt;</b>			
ID	Claim ID	Required	<a href="https://shafafiyaportal.doh.gov.ae/dictionary/CommonTypes_xsd~s~ClaimID.html">https://shafafiyaportal.doh.gov.ae/dictionary/CommonTypes_xsd~s~ClaimID.html</a>
ProviderID	Claim ProviderID	Required	<a href="https://shafafiyaportal.doh.gov.ae/dictionary/CommonTypes_xsd~s~ClaimProviderID.html">https://shafafiyaportal.doh.gov.ae/dictionary/CommonTypes_xsd~s~ClaimProviderID.html</a>
<b>&lt;Encounter&gt;</b>			
FacilityID	Encounter Facility ID	Required	<a href="https://shafafiyaportal.doh.gov.ae/dictionary/CommonTypes_xsd~s~EncounterFacilityID.html">https://shafafiyaportal.doh.gov.ae/dictionary/CommonTypes_xsd~s~EncounterFacilityID.html</a>
ID	Encounter ID	Required	Unique identifier of Encounter, as reported to Malaffi



Field Name	Description	Validation	Data Format / Definition
ActivityClinicianID	ActivityClinician	Required	<a href="https://shafafiyaportal.doh.gov.ae/dictionary/CommonTypes_xsd~s~ActivityClinician.html">https://shafafiyaportal.doh.gov.ae/dictionary/CommonTypes_xsd~s~ActivityClinician.html</a>
PatientID	Encounter Patient ID	Required	<a href="https://shafafiyaportal.doh.gov.ae/dictionary/CommonTypes_xsd~s~EncounterPatientID.html">https://shafafiyaportal.doh.gov.ae/dictionary/CommonTypes_xsd~s~EncounterPatientID.html</a>
Type	Encounter Type	Required	<a href="https://shafafiyaportal.doh.gov.ae/dictionary/CommonTypes_xsd~s~EncounterType.html">https://shafafiyaportal.doh.gov.ae/dictionary/CommonTypes_xsd~s~EncounterType.html</a>
Start	Encounter Start Date	Required	<a href="https://shafafiyaportal.doh.gov.ae/dictionary/CommonTypes_xsd~s~EncounterStart.html">https://shafafiyaportal.doh.gov.ae/dictionary/CommonTypes_xsd~s~EncounterStart.html</a>
End	Encounter End Date	Required. If Value does not exist, use placeholder value "31/12/2099 00:00:00"	<a href="https://shafafiyaportal.doh.gov.ae/dictionary/CommonTypes_xsd~s~EncounterEnd.html">https://shafafiyaportal.doh.gov.ae/dictionary/CommonTypes_xsd~s~EncounterEnd.html</a>
StartType	Encounter Start Type	Required. Enter '0' if no value.	<a href="https://shafafiyaportal.doh.gov.ae/dictionary/CommonTypes_xsd~s~EncounterStartType.html">https://shafafiyaportal.doh.gov.ae/dictionary/CommonTypes_xsd~s~EncounterStartType.html</a>
Specialty	Encounter Physician Specialty	Required	<a href="https://shafafiyaportal.doh.gov.ae/dictionary/CommonTypes_xsd~s~EncounterSpeciality.html">https://shafafiyaportal.doh.gov.ae/dictionary/CommonTypes_xsd~s~EncounterSpeciality.html</a>
SubSpecialty	Encounter Physician Sub-Specialty	Can be empty	Text
DRGCode	IRDRG	Required when ActivityType=9, can be empty. Provide one code only.	<a href="https://shafafiyaportal.doh.gov.ae/dictionary/CommonTypes_xsd~s~ActivityCode.html">https://shafafiyaportal.doh.gov.ae/dictionary/CommonTypes_xsd~s~ActivityCode.html</a>
ServiceCode	Service Code For Bundles Such As Long Term Care	Required when ActivityType=8. Can be empty. Provide one code only.	<a href="https://shafafiyaportal.doh.gov.ae/dictionary/CommonTypes_xsd~s~ActivityCode.html">https://shafafiyaportal.doh.gov.ae/dictionary/CommonTypes_xsd~s~ActivityCode.html</a>



Field Name	Description	Validation	Data Format / Definition
EndType	Encounter End Type	Required. Enter '0' if no value.	<a href="https://shafafiyaportal.doh.gov.ae/dictionary/CommonTypes_xsd~s~EncounterEndType.html">https://shafafiyaportal.doh.gov.ae/dictionary/CommonTypes_xsd~s~EncounterEndType.html</a>
<Diagnosis>			
Type	Diagnosis Type	Principal Only	<a href="https://shafafiyaportal.doh.gov.ae/dictionary/CommonTypes_xsd~s~DiagnosisType.html">https://shafafiyaportal.doh.gov.ae/dictionary/CommonTypes_xsd~s~DiagnosisType.html</a>
Code	Diagnosis Code	Principal Diagnosis Code. Provide one code only	<a href="https://shafafiyaportal.doh.gov.ae/dictionary/CommonTypes_xsd~s~DiagnosisCode.html">https://shafafiyaportal.doh.gov.ae/dictionary/CommonTypes_xsd~s~DiagnosisCode.html</a>
</Diagnosis>			
<Procedure>			
Type	Principal or Secondary	Required when ActivityType=3 and TheatreAttendanceFlag=1 , can be empty	Text. Either Principal or Secondary.
Code	CPT Code	Required when ActivityType=3 and TheatreAttendanceFlag=1 , can be empty	<a href="https://shafafiyaportal.doh.gov.ae/dictionary/CommonTypes_xsd~s~ActivityID.html">https://shafafiyaportal.doh.gov.ae/dictionary/CommonTypes_xsd~s~ActivityID.html</a>
Duration	Activity Duration In Minutes	Required when ActivityType=3 and TheatreAttendanceFlag=1. Enter '0' if no value.	Integer. 0 or greater.
</Procedure>			



Field Name	Description	Validation	Data Format / Definition
EDTriageLevel	Triage Levels (1-5)	Required if Encounter Type = 2, 41 or 42. (ED Room, Ambulance). Enter '0' if no value.	Integer. Between 0 and 5 only.
OPAttendanceType	Type of Attendance	Required if Encounter Type =1, can be empty	Text. Characterise the Encounter: e.g. First visit, Follow-up visit
TheatreAttendanceFlag	Theatre Attendance	Required. Enter '0' if no value.	Binary Flag. 1=True, 0=False
CriticalCareTime	HDU/ICU/CCU etc. in minutes.	Required. Enter '0' if no value.	Integer. 0 or greater.
VentilationTime	Duration Of Ventilation In Minutes.	Required. Enter '0' if no value.	Integer. 0 or greater.
<CostBucketDirect>			
Allied	Allied Health Services Including Technicians	Required. Enter '0.000' if no value.	Number. A value in Dhs as determined by Abu Dhabi Clinical Cost Data Collection (ADCCDC)
Anaesthesia	Anaesthesia Services	Required. Enter '0.000' if no value.	Number. A value in Dhs as determined by Abu Dhabi Clinical Cost Data Collection (ADCCDC)
Dental	Dental Services	Required. Enter '0.000' if no value.	Number. A value in Dhs as determined by Abu Dhabi Clinical Cost Data Collection (ADCCDC)
ED	Emergency Department	Required. Enter '0.000' if no value.	Number. A value in Dhs as determined by Abu Dhabi Clinical Cost Data Collection (ADCCDC)
Home	Homecare Services	Required. Enter '0.000' if no value.	Number. A value in Dhs as determined by Abu Dhabi Clinical Cost Data Collection (ADCCDC)



Field Name	Description	Validation	Data Format / Definition
ICU	Intensive Care, Critical Care, Coronary Care, And High Dependency Units	Required. Enter '0.000' if no value.	Number. A value in Dhs as determined by Abu Dhabi Clinical Cost Data Collection (ADCCDC)
Imaging	Imaging Services	Required. Enter '0.000' if no value.	Number. A value in Dhs as determined by Abu Dhabi Clinical Cost Data Collection (ADCCDC)
Laboratory	Laboratory Services	Required. Enter '0.000' if no value.	Number. A value in Dhs as determined by Abu Dhabi Clinical Cost Data Collection (ADCCDC)
Physician	Physician Services	Required. Enter '0.000' if no value.	Number. A value in Dhs as determined by Abu Dhabi Clinical Cost Data Collection (ADCCDC)
OP	Outpatient Clinics	Required. Enter '0.000' if no value.	Number. A value in Dhs as determined by Abu Dhabi Clinical Cost Data Collection (ADCCDC)
OR	Operating Room	Required. Enter '0.000' if no value.	Number. A value in Dhs as determined by Abu Dhabi Clinical Cost Data Collection (ADCCDC)
Other	Other Services	Required. Enter '0.000' if no value.	Number. A value in Dhs as determined by Abu Dhabi Clinical Cost Data Collection (ADCCDC)
Pharmacy	Pharmacy Services	Required. Enter '0.000' if no value.	Number. A value in Dhs as determined by Abu Dhabi Clinical Cost Data Collection (ADCCDC)
Prosthesis	Patient Implants	Required. Enter '0.000' if no value.	Number. A value in Dhs as determined by Abu Dhabi Clinical Cost Data Collection (ADCCDC)
SPS	Special Procedure Suites e.g. Endoscopy; Cath Lab	Required. Enter '0.000' if no value.	Number. A value in Dhs as determined by Abu Dhabi Clinical Cost Data Collection (ADCCDC)
Ward	Ward Services	Required. Enter '0.000' if no value.	Number. A value in Dhs as determined by Abu Dhabi Clinical Cost Data Collection (ADCCDC)
</CostBucketDirect>			



Field Name	Description	Validation	Data Format / Definition
<CostBucketOverheads>			
Allied	Allied Health Services Including Technicians	Required. Enter '0.000' if no value.	Number. A value in Dhs as determined by Abu Dhabi Clinical Cost Data Collection (ADCCDC)
Anaesthesia	Anaesthesia Services	Required. Enter '0.000' if no value.	Number. A value in Dhs as determined by Abu Dhabi Clinical Cost Data Collection (ADCCDC)
Dental	Dental Services	Required. Enter '0.000' if no value.	Number. A value in Dhs as determined by Abu Dhabi Clinical Cost Data Collection (ADCCDC)
ED	Emergency Department	Required. Enter '0.000' if no value.	Number. A value in Dhs as determined by Abu Dhabi Clinical Cost Data Collection (ADCCDC)
Home	Homecare Services	Required. Enter '0.000' if no value.	Number. A value in Dhs as determined by Abu Dhabi Clinical Cost Data Collection (ADCCDC)
ICU	Intensive Care, Critical Care, Coronary Care, And High Dependency Units	Required. Enter '0.000' if no value.	Number. A value in Dhs as determined by Abu Dhabi Clinical Cost Data Collection (ADCCDC)
Imaging	Imaging Services	Required. Enter '0.000' if no value.	Number. A value in Dhs as determined by Abu Dhabi Clinical Cost Data Collection (ADCCDC)
Laboratory	Laboratory Services	Required. Enter '0.000' if no value.	Number. A value in Dhs as determined by Abu Dhabi Clinical Cost Data Collection (ADCCDC)
Physician	Physician Services	Required. Enter '0.000' if no value.	Number. A value in Dhs as determined by Abu Dhabi Clinical Cost Data Collection (ADCCDC)
OP	Outpatient Clinics	Required. Enter '0.000' if no value.	Number. A value in Dhs as determined by Abu Dhabi Clinical Cost Data Collection (ADCCDC)
OR	Operating Room	Required. Enter '0.000' if no value.	Number. A value in Dhs as determined by Abu Dhabi Clinical Cost Data Collection (ADCCDC)



Field Name	Description	Validation	Data Format / Definition
Other	Other Services	Required. Enter '0.000' if no value.	Number. A value in Dhs as determined by Abu Dhabi Clinical Cost Data Collection (ADCCDC)
Pharmacy	Pharmacy Services	Required. Enter '0.000' if no value.	Number. A value in Dhs as determined by Abu Dhabi Clinical Cost Data Collection (ADCCDC)
Prosthesis	Patient Implants	Required. Enter '0.000' if no value.	Number. A value in Dhs as determined by Abu Dhabi Clinical Cost Data Collection (ADCCDC)
SPS	Special Procedure Suites e.g. Endoscopy; Cath Lab	Required. Enter '0.000' if no value.	Number. A value in Dhs as determined by Abu Dhabi Clinical Cost Data Collection (ADCCDC)
Ward	Ward Services	Required. Enter '0.000' if no value.	Number. A value in Dhs as determined by Abu Dhabi Clinical Cost Data Collection (ADCCDC)
</CostBucketOverheads>			
<CostTypeDetails>			
SWNurs	Salaries and Wages Nursing	Required. Enter '0.000' if no value.	Number. A value in Dhs as determined by Abu Dhabi Clinical Cost Data Collection (ADCCDC)
SWDoc	Salaries and Wages Medical	Required. Enter '0.000' if no value.	Number. A value in Dhs as determined by Abu Dhabi Clinical Cost Data Collection (ADCCDC)
SWAllied	Salaries and Wages Allied Health Professionals Including Technicians (e.g. Operating Room)	Required. Enter '0.000' if no value.	Number. A value in Dhs as determined by Abu Dhabi Clinical Cost Data Collection (ADCCDC)
SWNonClin	Salaries and Wages Non-Clinical staff	Required. Enter '0.000' if no value.	Number. A value in Dhs as determined by Abu Dhabi Clinical Cost Data Collection (ADCCDC)
Laboratory	Laboratory Supplies	Required. Enter '0.000' if no value.	Number. A value in Dhs as determined by Abu Dhabi Clinical Cost Data Collection (ADCCDC)



Field Name	Description	Validation	Data Format / Definition
Imaging	Imaging Supplies	Required. Enter '0.000' if no value.	Number. A value in Dhs as determined by Abu Dhabi Clinical Cost Data Collection (ADCCDC)
Pharmacy	Pharmacy Drugs and Services	Required. Enter '0.000' if no value.	Number. A value in Dhs as determined by Abu Dhabi Clinical Cost Data Collection (ADCCDC)
Prostheses	Implantable Devices	Required. Enter '0.000' if no value.	Number. A value in Dhs as determined by Abu Dhabi Clinical Cost Data Collection (ADCCDC)
MS	All Other Medical And Surgical Supplies	Required. Enter '0.000' if no value.	Number. A value in Dhs as determined by Abu Dhabi Clinical Cost Data Collection (ADCCDC)
Hotel	Cleaning, Linen And Laundry, Patient Food	Required. Enter '0.000' if no value.	Number. A value in Dhs as determined by Abu Dhabi Clinical Cost Data Collection (ADCCDC)
GS	All Other Goods And Services	Required. Enter '0.000' if no value.	Number. A value in Dhs as determined by Abu Dhabi Clinical Cost Data Collection (ADCCDC)
Depreciation	Building And Equipment Depreciation And Amortization	Required. Enter '0.000' if no value.	Number. A value in Dhs as determined by Abu Dhabi Clinical Cost Data Collection (ADCCDC)
OHF	Overhead Cost Of Healthcare Facility	Required. Enter '0.000' if no value.	Number. A value in Dhs as determined by Abu Dhabi Clinical Cost Data Collection (ADCCDC)
OH Depreciation	Building And Equipment Depreciation And Amortization Recorded In Facility Overhead Cost Centers	Required. Enter '0.000' if no value.	Number. A value in Dhs as determined by Abu Dhabi Clinical Cost Data Collection (ADCCDC)
OHC	Overheads Cost From Corporate Office / Shared Services	Required. Enter '0.000' if no value.	Number. A value in Dhs as determined by Abu Dhabi Clinical Cost Data Collection (ADCCDC)



Field Name	Description	Validation	Data Format / Definition
NABMs	Funded Mandates Reported As Negative Cost Type	Required. Enter '0.000' if no value.	Number. A value in Dhs as determined by Abu Dhabi Clinical Cost Data Collection (ADCCDC)
</CostTypeDetails>			
</Encounter>			
<Resubmission>			
Type	Resubmission Type	Required If Valid Resubmission. Can Be Empty	<a href="https://shafafiyaportal.doh.gov.ae/dictionary/CommonTypes_xsd~s~ResubmissionType.html">https://shafafiyaportal.doh.gov.ae/dictionary/CommonTypes_xsd~s~ResubmissionType.html</a>
Comment	Resubmission Comment	If Valid Resubmission, Must Say 'Correction'. Can Be Empty.	<a href="https://shafafiyaportal.doh.gov.ae/dictionary/CommonTypes_xsd~s~ResubmissionComment.html">https://shafafiyaportal.doh.gov.ae/dictionary/CommonTypes_xsd~s~ResubmissionComment.html</a>
</Resubmission>			
</Claim>			



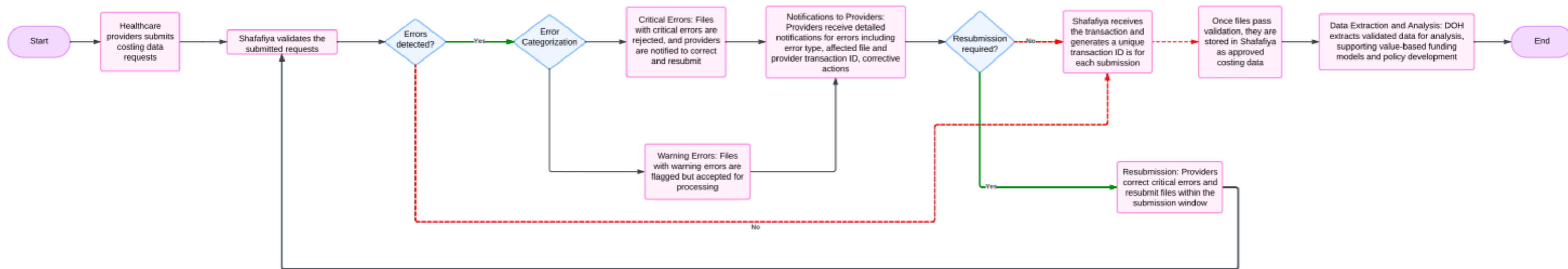
# Shafafiya Submission Portal

## Validations:

Since this is the first year of cost data submission for the healthcare providers, the validations are kept at the minimum. In future, more validations will be added to the submission process to enhance the accuracy of received cost data. Please note that the below validations would be in addition to the submission validations mentioned in table above.

Patient Type	Title	Description	Tolerance	Flag
All Encounter Types	Duplicate Cost types	Duplicate Cost Types in one patient encounter		Block
	Duplicate Cost buckets	Duplicate Cost Buckets in one patient encounter		Block
	Zero Total Cost at the encounter level	Zero Total cost at the encounter level for any encounter (sum of all cost buckets and cost types) can only be used to cancel previous incorrect submission		Block, unless <Resubmission> element is present
	Negative Cost at the encounter level	Negative cost at the encounter level for any encounter (sum of all cost buckets and cost types)		Block
	NABM Cost Type (Refer to output tab) - applicable to SEHA Group only	If SEHA Group then value allowed ; error for other entities	Warning for SEHA if zero value or value > zero;	Warning

## Submission end-to-end process flow



1. Submitted files are validated for schema, content, and DOH rules.
2. Critical errors result in file rejection; providers are notified to correct and resubmit.
3. Warning errors are flagged but do not block acceptance.
4. Providers receive error notifications with detailed feedback.
5. Resubmitted files follow the same workflow until validation passes.

## Internal validations and quality checks:

Healthcare facilities must run minimum of below internal validations and quality checks before submitting the cost data in Shafafiya. These internal validations and quality checks are directional and non-exhaustive and will expand over time. The cost practitioners should also use their experience, judgement and analytical skills to validate the costing output before submission.

DOH Clinical Costing team reserves the right to reject the cost data file and request for resubmission if it is not validated against these validation rules and quality checks.

Patient Type	Title	Description	Tolerance
Emergency	High Cost Low Triage	Identify encounters in low triage codes (3,4,5) with high costs	Where triage category is 3, 4, or 5 and total cost of the encounter is >10,000 Dhs
Emergency	Low Cost High Triage	Identify encounters in triage codes 1 and 2 with low costs	Where triage category is 1 or 2 and the total cost of the encounter is <500 Dhs
Emergency	High Cost High Triage	Identify encounters in triage codes 1 and 2 with high costs	Where triage category is 1 or 2 and the total cost of the encounter is >20,000 Dhs
Emergency	No Triage	Missing triage data at the encounter level	Identify encounters with no triage data
Emergency	No Physician Cost	Identify emergency encounters without physician costs	
Emergency	No ED Cost	Identify emergency department encounters with no associated costs	
Emergency	No Triage Data	Identify the missing triage data at the encounter level	
Emergency	Frequent User	Identify patients with > 10 emergency encounters in the year	



Patient Type	Title	Description	Tolerance
Inpatient	Low LOS Costs	Identify all same day encounters that are low cost	Where LOS = Same day and total encounter costs less than or equal to 100 Dhs by DRG
Inpatient	Low Multi-Day Costs	Identify all multiday or one day encounters that have a low per day cost	Where LOS = Multiday and total encounter cost per day is less than or equal to 500 Dhs by DRG
Inpatient	High Costs	Identify total high-cost encounters (excluded LTC type)	Total encounter cost is $\geq 500,000$ Dhs by DRG
Inpatient	ICU Hours No Cost	Identify encounters where ICU hours have been reported but no corresponding ICU cost	Where ICU Hours is $> 0$ and total cost for ICU = 0 by DRG
Inpatient	ICU Hours No Cost	Identify encounters where ICU costs have been reported but no corresponding ICU hours	Where ICU cost is $> 0$ and ICU hours = 0 by DRG
Inpatient	Surgical DRG No OR Cost	Identify encounters with surgical DRGs with no Operating Room or Special Procedure Suites cost	Where encounters are grouped to surgical DRGs but OR and SPS cost buckets have zero cost
Inpatient	Prostheses DRG No Cost	Identify encounters in DRGs with expected prostheses consumption but no prosthesis cost	Where encounters are grouped to DRGs with expected prosthesis consumption, but the prosthesis cost bucket has zero cost
Inpatient	No Ward / HDU Cost	Identify inpatient encounters without Ward / HDU costs	Encounter IP with ward / HDU cost = 0 Dhs
Inpatient	Longest LOS	Identify the top 10 IP encounter with the longest LOS for the facility	
Inpatient	No Physician Cost	Identify inpatient encounters where physician costs are missing	
Inpatient	No Pharmacy Cost	Identify inpatient encounters with no pharmacy costs	
Inpatient	No Laboratory Cost	Identify inpatient encounters without laboratory costs	



Patient Type	Title	Description	Tolerance
Inpatient	OR Cost But No Anaesthesia Cost	Identify encounters with OR cost but no Anaesthesia cost	
Inpatient	Identify High Cost Other Services	Identify encounters with >10,000 Dhs in Other Services	
Inpatient	Encounter Los > 3 Months	Identify inpatient encounters with a length of stay greater than 3 months	
Inpatient	No Nursing Cost type	Identify inpatient encounters missing nursing costs	
Inpatient	Duplicate Encounter Ids	Identify duplicate IDs across inpatient encounters	
Outpatient	High Clinic Costs	Identify non admitted encounters with high total costs for clinic attendances	Total encounter cost is > 3,000 Dhs
Outpatient	Low Clinic Costs	Identify non admitted encounters with low total costs for clinic attendances	Total encounter cost is < 50 Dhs
Outpatient	Unexpected Clinic Costs	Identify non admitted clinic encounters with unexpected costs	Identify where ICU, OR, SPS, ED cost buckets have cost against these encounters
Outpatient	High Day Procedure Costs	Identify non admitted procedure encounters with high costs	Total encounter costs is > 25,000 Dhs
Outpatient	Low Day Procedure Costs	Identify non admitted procedure encounters with low costs	Total encounter costs is <500 Dhs
Outpatient	High Laboratory Costs	Identify non admitted laboratory encounters with high costs	Total encounter cost is > 1,000 Dhs
Outpatient	Low Laboratory Costs	Identify non admitted laboratory encounters with low costs	Total encounter cost is < 10 Dhs
Outpatient	High Imaging Costs	Identify non admitted imaging encounters with high costs	Total encounter cost is > 5,000 Dhs
Outpatient	Low Imaging Costs	Identify non admitted imaging encounters with low costs	Total encounter cost is < 50 Dhs
Outpatient	High Pharmacy Costs	Identify non admitted pharmacy encounters with high costs	Total encounter cost is > 1,000 Dhs
Outpatient	Low Pharmacy Costs	Identify non admitted pharmacy encounters with low costs	Total encounter cost is < 10 Dhs



Patient Type	Title	Description	Tolerance
Outpatient	Other Unexpected Costs	Identify non admitted encounters with unexpected cost buckets	Identify Imaging, Laboratory, Pharmacy encounter costs with costs in unexpected cost buckets: Ward, ICU, OR, SPS, ED, PROS, ANAES
Outpatient	No Supplies Cost	Identify outpatient encounters without any supplies costs	
Outpatient	Identify High Cost Other Services	Identify encounters with >10,000 Dhs in Other Services	<10,000 Dhs in Other Services
Outpatient	Unexpected Cost Buckets	Identify encounters with unexpected cost buckets	

# Document Version History

Version	Publish Date (Month Year)	Overview of Changes
v1.00	February 2026	<p>Updated from Submission Year 1 Document (v1.12)                      Split FAQ into separate document.</p> <p><u>Fields Added</u></p> <p>ActivityClinicianID (Encounter)                      ServiceCode (Encounter)                      Dental (CostBucketDirect, CostBucketOverhead)                      Home (CostBucketDirect, CostBucketOverhead)                      OH Depreciation (Cost Type)</p> <p><u>Fields Removed</u></p> <p>Supplies (CostBucketDirect, CostBucketOverhead)</p> <p>Updated Validation Requirements in Schema Table (pp11-19)</p>